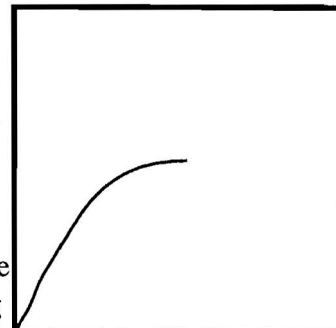


# Block of the Month—Mountain Laurel

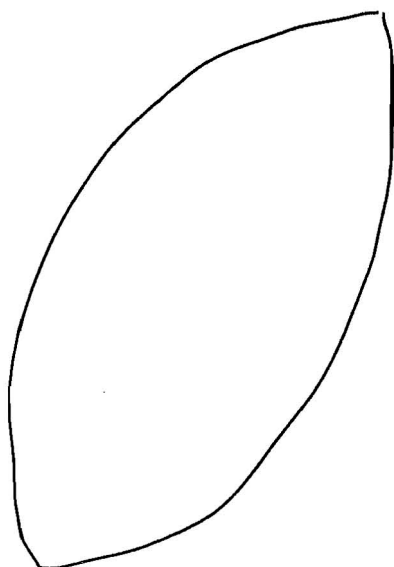
## Applique and Yoyos

Cut 8 1/2" square from background fabric. This can be varied depending on what size block you would like.

**Stem:** Cut a strip of bias for the stem, 1" wide. Press in half lengthwise. Determine where on your background square you would like the finished stem to appear, and draw a light pencil line, preferably curved slightly. Stitch bias to background, using pencil line as a guide for the raw edges. Trim raw edges, turn and press, Applique fold to background fabric, using small stitches.



**Leaves:** Draw leaves on non-sticky side of light weight iron-on interfacing. Place right side of interfacing to right side of leaf fabric, and stitch around on the line, using shortened stitches. Trim to 1/8" seam allowance, clipping corners and "v" cuts along the curved seams. Slit interfacing enough to allow turning. Turn and finger press. Do not press with iron!



(Approximate size and shape of leaves. Suggestion: draw them all free-hand to the size you would like. All leaves are different, and will look better if they are not all the same.)

To make two-colored leaves, stitch two strips of different values together, right sides together, press open seam, and place interfacing on right side, straddling the seam. A curved seam can be made by placing the two different colored fabrics together, right sides together, and cutting a curve. Then place one concave side on top of one convex side and stitch. Press and proceed as above.

Place leaves on background square as desired, press with fairly hot iron, turning background square to wrong side and pressing well to adhere leaves to fabric. Applique leaves in place.

**Blossoms:** Cut 2 1/2" circles of blossom fabric. Turn in 1/4" and stitch around by hand. Draw up to create yoyo. Flatten slightly. Use yellow or orange embroidery floss to make French knots to hold yoyos in place. Edges may be tacked down if desired. Make as many yoyos as you feel will portray the mountain laurel flower. Suggest you use a pink and white, small patterned fabric for flowers.

